



31 October 2022

ASX Announcement

Site Construction Commences Ahead Of Stage 1 Mining.

Classic Minerals Limited (ASX: CLZ” or “Classic” or “the Company”) is pleased to advise that construction activities have commenced on site for the development of the Company’s 100% owned Kat Gap gold mine as permitted by the approved Mining Proposal (MP), Mine Closure Plan (MCP) and Project Management Plan (PMP).

Having obtained all the requisite regulatory approvals, the stripping, and stockpiling of vegetation and topsoil commenced during the middle of October 2022. These earthwork activities are a required precursor to the commencement of mining.

We have engaged heavy machinery in building internal roads, bulldozing to clear areas for the waste rock dumps, clearing and preparing ROM pads, office, administrative and workshops areas. Site power is also being upgraded in readiness for Camp upgrade. Additional camp buildings will shortly be arriving onsite to complete the Camp upgrade.

Overall progress continues to remain on track with gold production planned towards the end of the first quarter of 2023. Classic is still awaiting processing approval. Once received, the Company will commence construction of the Tailing’s Storage Facility (TSF) and reassemble the Gekko gold treatment plant.

The Company is looking to have the Kat Gap site ready for stage 1 open-pit mining before the end of 2022. Classic also expects to start dry crushing plant commissioning activities before the end of the year.

The Company looks forward to providing regular updates to shareholders as the construction and commissioning program progresses over the next few months.

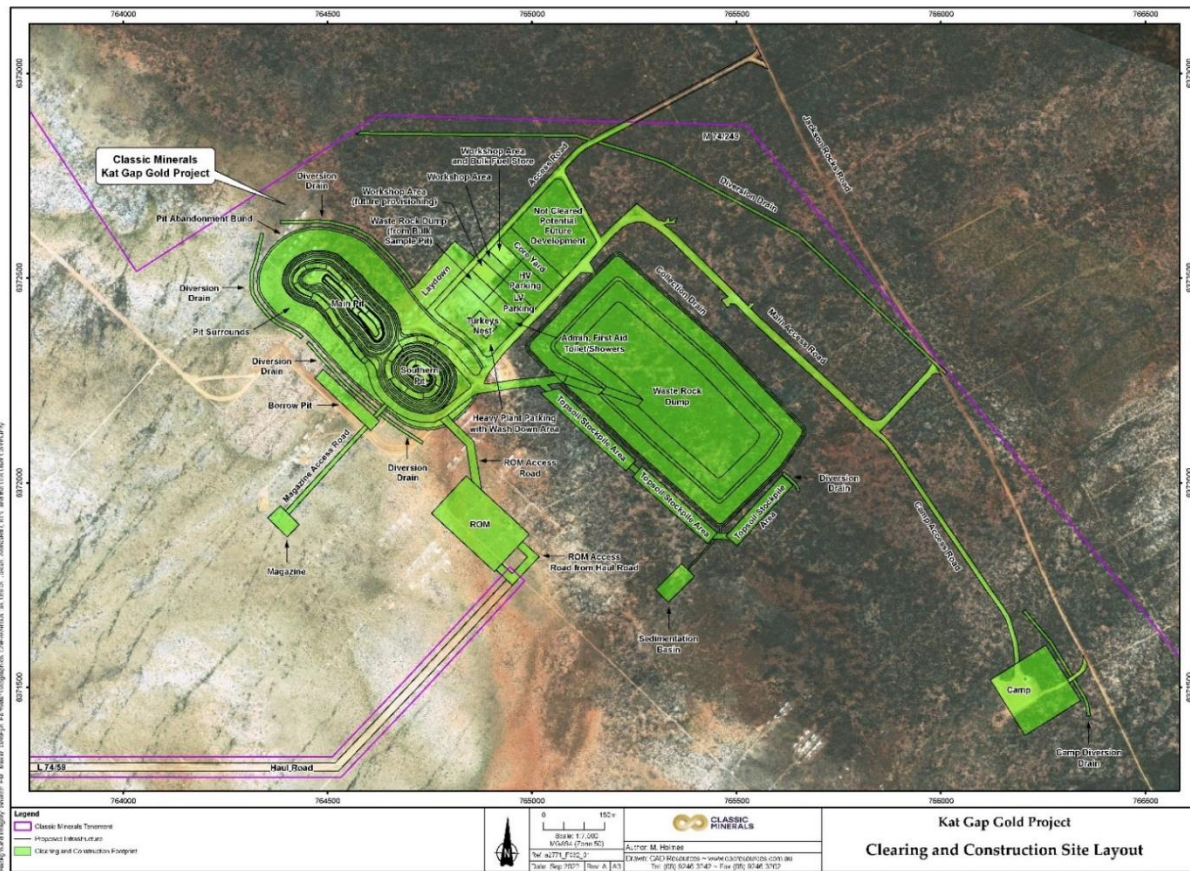


Figure 1: Kat Gap site layout plan which will service the mining operation with indicative pit design (Note: No evaluation/modelling has been undertaken on the concept pit outline)



Figure 2: Bulldozer clearing at Kat Gap site.



CLASSIC MINERALS

CLASSIC MINERALS LIMITED

71 Furniss Rd, Landsdale

Western Australia 6065

ASX: CLZ | ABN 119 484 016

contact@classicminerals.com.au



Figure 3 (below): Bulldozer clearing the ROM Pad and Haul Road at Kat Gap.

This announcement has been authorised by the Board.

ENDS:

ABOUT THE FORRESTANIA GOLD PROJECT

The FGP Tenements (excluding Kat Gap) are registered in the name of Reed Exploration Pty Ltd, a wholly owned subsidiary of ASX listed Hannans Ltd (ASX: HNR). Classic has acquired 80% of the gold rights on the FGP Tenements from a third party, whilst Hannans has maintained its 20% interest in the gold rights. For the avoidance of doubt Classic Ltd owns a 100% interest in the gold rights on the Kat Gap Tenements and also non-gold rights including but not limited to nickel, lithium and other metals.

Classic has inferred and indicated mineral resources of **8.24 Mt at 1.52 g/t for 403,906 ounces of gold**, classified and reported in accordance with the JORC Code (2012), with a recent Scoping Study (see ASX Announcement released 2nd May 2017) suggesting both the technical and financial viability of the project. The current post- mining Mineral Resource for Lady Ada, Lady Magdalene and Kat Gap is tabulated below. Additional technical detail on the Mineral Resource estimation is provided, further in the text below and in the JORC Table 1 as attached to ASX announcements dated 18 December 2019, 21 January 2020, and 20 April 2020.

Prospect	Indicated			Inferred			Total		
	Tonnes	Grade (Au g/t)	Ounces Au	Tonnes	Grade (Au g/t)	Ounces Au	Tonnes	Grade (au)	Ounces
Lady Ada	257,300	2.01	16,600	1,090,800	1.23	43,100	1,348,100	1.38	59,700
Lady Magdalene				5,922,700	1.32	251,350	5,922,700	1.32	251,350
Kat Gap				975,722	2.96	92,856	975,722	2.96	92,856
Total	257,300	2.01	16,600	7,989,222	1.50	387,306	8,246,522	1.52	403,906

Notes:

1. The Mineral Resource is classified in accordance with JORC, 2012 edition
2. The effective date of the mineral resource estimate is 20 April 2020.
3. The mineral resource is contained within FGP tenements
4. Estimates are rounded to reflect the level of confidence in these resources at the present time.
5. The mineral resource is reported at 0.5 g/t Au cut-off grade
6. Depletion of the resource from historic open pit mining has been considered

The Company confirms that it is not aware of any new information or data that materially affects the information included in this market announcement and, that all material assumptions and technical parameters underpinning the estimates in the relevant market announcement continue to apply and have not materially changed.

Forward Looking Statements

This announcement may contain certain “forward-looking statements” which may not have been based solely on historical facts, but rather may be based on the Company’s current expectations about future events and results. Where the Company expresses or implies an expectation or belief as to future events or results, such expectation or belief is expressed in good faith and believed to have reasonable basis. However, forward looking statements are subjected to risks, uncertainties, assumptions and other factors, which could cause actual results to differ materially from future results expressed, projected or implied by such forward-looking statements. Such risks include, but are not limited to Resource risk, metals price volatility, currency fluctuations, increased production costs and variances in ore grade or recovery rates from those assumed in mining plans, as well as political and operational risks in the Countries and States in which we operate or sell product to, and governmental regulation and judicial outcomes. For a more detailed discussion of such risks and other factors, see the Company’s annual reports, as well as the Company’s other filings. Readers should not place undue reliance on forward looking information. The Company does not undertake any obligation to release publicly any revisions to any “forward-looking statements” to reflect events or circumstances after the date of this announcement, or to reflect the occurrence of unanticipated events, except as may be required under applicable securities laws.

Competent Persons Statement

The information contained in this report that relates to Mineral resources and Exploration Results is based on information compiled by Dean Goodwin, a Competent Person who is a Member of the Australian Institute of Geoscientists (AIG). Mr Goodwin is a consultant exploration geologist with Reliant Resources Pty Ltd and consults to Classic Minerals Ltd. Mr. Goodwin has sufficient experience that is relevant to the style of mineralisation and the type of deposit under consideration, and to the activity being undertaken to qualify as a Competent Person as defined in the 2012 Edition of the “Australasian Code for Reporting of Exploration Results, Mineral Resources and Ore Reserves”. Mr. Goodwin consents to the inclusion in this report of the matters based on his information in the form and context in which it appears.